

## **Atlanta BeltLine Call for Artists - Railroad Artifact Sculpture**

### **Request for Proposals**

#### **Call Summary**

Artists and designers residing in the Southeastern United States with metal working experience are invited to apply for the opportunity to design and construct one or more interpretive sculptural public artworks for the Atlanta BeltLine composed of welded railroad artifacts. Using rails, spikes, plates, switches, rail anchors, and other steel artifacts that once lined the Atlanta BeltLine right-of-way, this commissioned work will act as a landmark and speak to the history of the rail corridor. The sculptural work should be 8-10 feet in height, or monumental in scale, with a three dimensional form. The work must be visible from a distance and should conceptually reference the history of the railroad. The artist or designer will be selected to undertake this project based upon past works, an interview and review of sketches or renderings of the proposed work.

This opportunity is open to all residents of the Southeastern United States. The application deadline is **5:00 p.m. January 7, 2013.**

#### **Artist/Designer Selection Criteria**

- Artists must have metal working experience
- The sculpture must contain at least 80% railroad artifacts provided by Atlanta BeltLine (detail below)
- Ability to communicate with the public
- The artist must utilize materials that will be durable and will require minimal maintenance
- The artist must create a piece that will not negatively impact the public's health & safety (e.g. no sharp edges)
- The sculpture must be constructed to allow the piece to be moved if necessary
- The completed sculpture must include a two year maintenance plan, including detailed description of materials, repair guidelines, footing or foundation details and documentation certifying the integrity of welds.

The funding available for design, fabrication, engineering, installation, and transportation of the art will be up to \$20,000, inclusive of artist design fees and all other costs.

It will be the responsibility of the selected artist or designer to engage the services of any sub-consultants such as but not limited to a structural engineer to verify the various components integral to the erection of the sculpture. Services shall be inclusive of any requisite stamped drawings that may be required by the City of Atlanta.

#### **Project Background**

The railroad once existed as a border between neighborhoods, a birthplace of industry and the foundation of Atlanta as a trade and business hub. However, in the past decades the corridor has been subject to years of neglect, with businesses and residences facing away from the rail corridor. As the Atlanta BeltLine develops, the historic rail is being removed, giving way to a multi-use trail and transit corridor, readopting the corridor as a public amenity.

The Atlanta BeltLine is a \$2.8 billion redevelopment project that will shape the way Atlanta grows over the next several decades. The project provides a network of public parks, multi-use trails and transit along a historic 22-mile railroad corridor circling downtown and connecting 45 neighborhoods directly to each other. The Atlanta BeltLine is the most comprehensive economic development effort ever undertaken in the City of Atlanta and among the largest, most wide-ranging urban redevelopment projects currently underway in the United States. As this space transforms, there is an opportunity to place sculpture that speaks to this complex history. At the heart of the Atlanta BeltLine is an integrated approach to land use, transportation, greenspace and sustainable development that will create a framework for future growth in the City of Atlanta.

**Site visits will be scheduled to view and photograph the railroad artifacts in storage and answer any questions about the project.**

**Schedule of site visits:**

**Saturday, December 1**

**10:00am**

**Trees Atlanta**

**225 Chester Ave. SE, Atlanta GA 30316**

**Wednesday, December 12**

**3:00pm**

**Trees Atlanta**

**225 Chester Ave. SE, Atlanta GA 30316**

**Saturday, December 15**

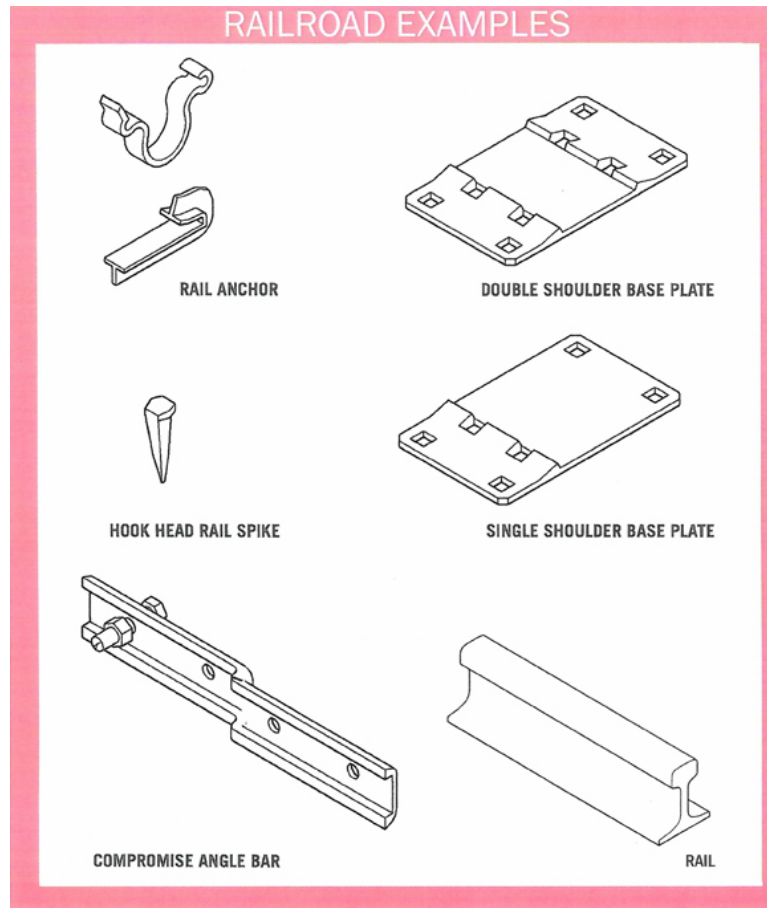
**1:00pm**

**Trees Atlanta**

**225 Chester Ave. SE, Atlanta GA 30316**

## Railroad Artifact Detail

The diagram below illustrates a few of the more common items that may be incorporated into the final work:



### Selection process

The selection panel will review all submissions, resumes, supporting materials, and budgets. Candidates may be asked to be interviewed. The candidate selected will enter into a contract to work with Atlanta BeltLine, Inc.

### Selection panel

The selection panel will consist of representatives of Atlanta BeltLine, Inc., City of Atlanta Office of Cultural Affairs, the International Interior Designers Association, and members from the arts community. Final decision will be through the approval of Atlanta BeltLine, Inc. with a recommendation from the panel.

### Deadline

**Materials must be received by 5:00pm on January 7, 2013. This date is not a postmarked deadline.** No late applications will be accepted or deadline extensions given.

**Submission materials**

If you would like to submit your documents electronically, please send them to [fyalouris@atlbeltline.org](mailto:fyalouris@atlbeltline.org). **Please submit files in a single PDF format where possible.**

If you would like to submit your documents by U.S. mail or walk in, please submit two printed copies. All hardcopy materials must be on 8 ½ x 11 paper. Hard copy materials will not be returned.

**Please address all materials to:**

Fred Yalouris  
Director of Design  
Atlanta BeltLine, Inc.  
86 Pryor Street, Suite 200  
Atlanta, GA 30303

Please submit the following for consideration. There is not an application form. Please format images and documents to allow for printing on white 8½ x 11-inch paper.

- **Project Description:** A one page letter describing your sculpture, materials, design, and fabrication process.
- **Itemized Budget:** A one page, detailed budget listing all materials, tools, design, and construction costs.
- **Sketch and Elevations:** Up to four images. These images should include dimensions and labeled materials.
- **Support Images:** Up to 10 digital images of applicable work (jpeg format, 300 dpi, and sized at least 4-inches x 5-inches). If you are submitting in hard copy, please clearly label a CD with your information to be included in your submission.
- **Image list:** A descriptive listing of the images that correspond with your support images. Information should include title, date of completion, material(s), size, project budget, and a thumbnail of the image.
- **Resume:** A current resume of no more than three pages. Please include your address, email address, and daytime telephone number. For team applications, please include single page resumes for each team member.

**For Additional Information please contact**

Elan Buchen, Project Coordinator: Art & Design,  
Atlanta BeltLine, Inc., [ebuchen@atlbeltline.org](mailto:ebuchen@atlbeltline.org), 404-588-5466

or

Fred Yalouris, Director of Design,  
Atlanta BeltLine, Inc., [fyalouris@atlbeltline.org](mailto:fyalouris@atlbeltline.org), 404-614-8329

**Project Timeline**

Scheduled events to review materials-  
Submission deadline – January 7, 2013  
Panel review – Week of January 14, 2013  
Finalists' notification – Friday, January 18, 2013  
Final artist selection – Week of January 21, 2013