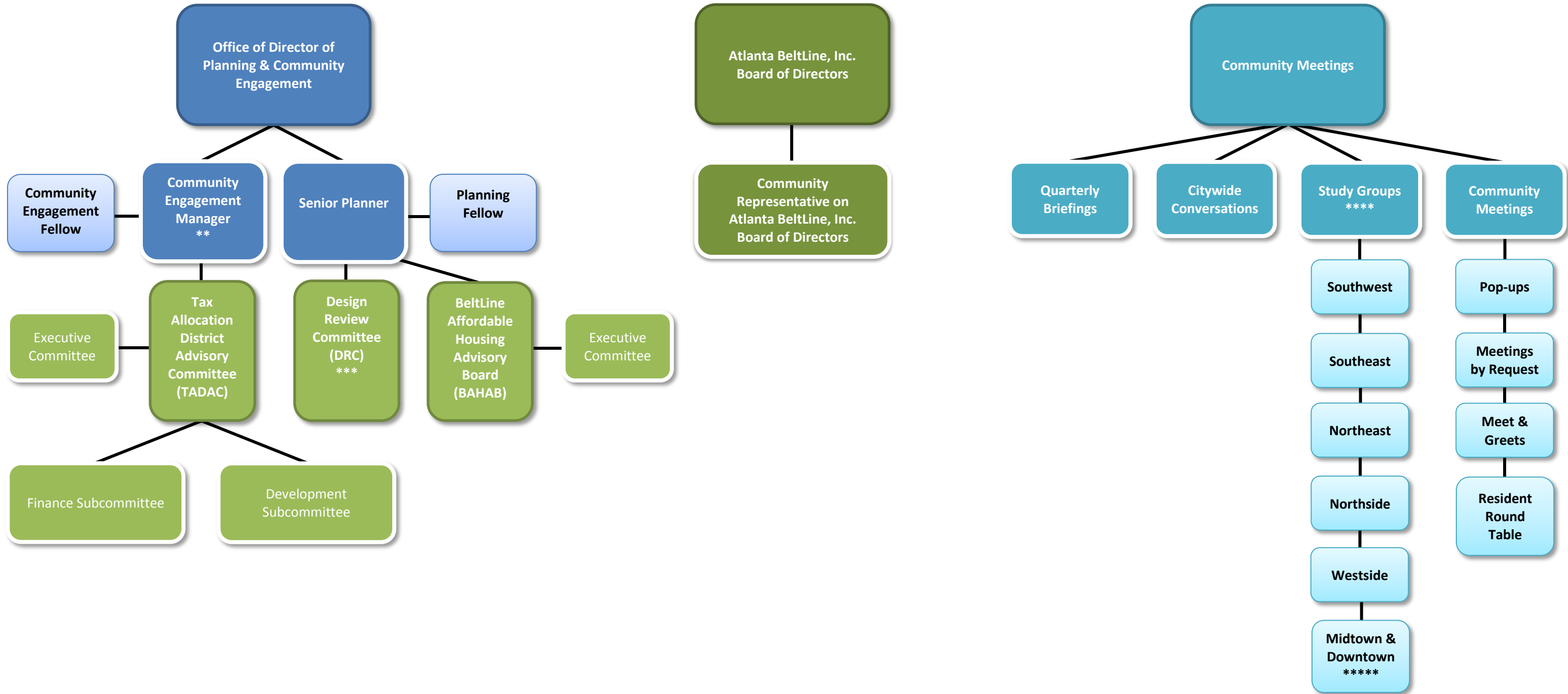


Expanded Atlanta BeltLine Planning & Community Engagement Framework\*



\*BeltLine Citizen Participation Framework established in Resolution 06-R-1576 is referred to as Community Engagement Framework  
 \*\*Citizen Participation Advocate established in Resolution 06-R-1576 is referred to as Community Engagement Manager  
 \*\*\*Design Review Committee established in Resolution 14-R-4377  
 \*\*\*\* Planning Units established in Resolution 06-R-1576 are referred to as Study Groups  
 \*\*\*\*\* Midtown & Downtown Study Groups held as needed for issues related to Crosstown transit routes